

1F-12 Engine Cooling System:

- 5) Read the thermometer just when opening the thermostat. If this reading, which is the temperature level at which the thermostat valve begins to open, is out of the standard value, replace the thermostat with a new one.

Thermostat valve opening temperature

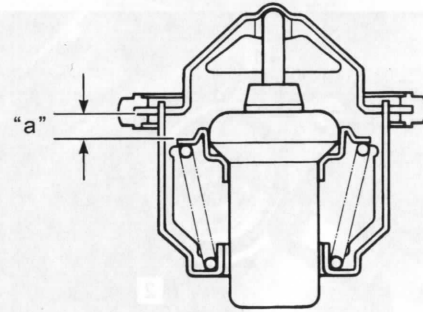
Standard: 86.5 – 89.5 °C (188 – 193 °F)

- 6) Keep on heating the water to raise its temperature.

- 7) Just when the water temperature reaches specified value, the thermostat valve should have been lifted by at least 8 mm (0.31 in). A thermostat failing to satisfy either of the two requirements (start-to-open temperature and valve lift) must be replaced.

Thermostat valve lift "a"

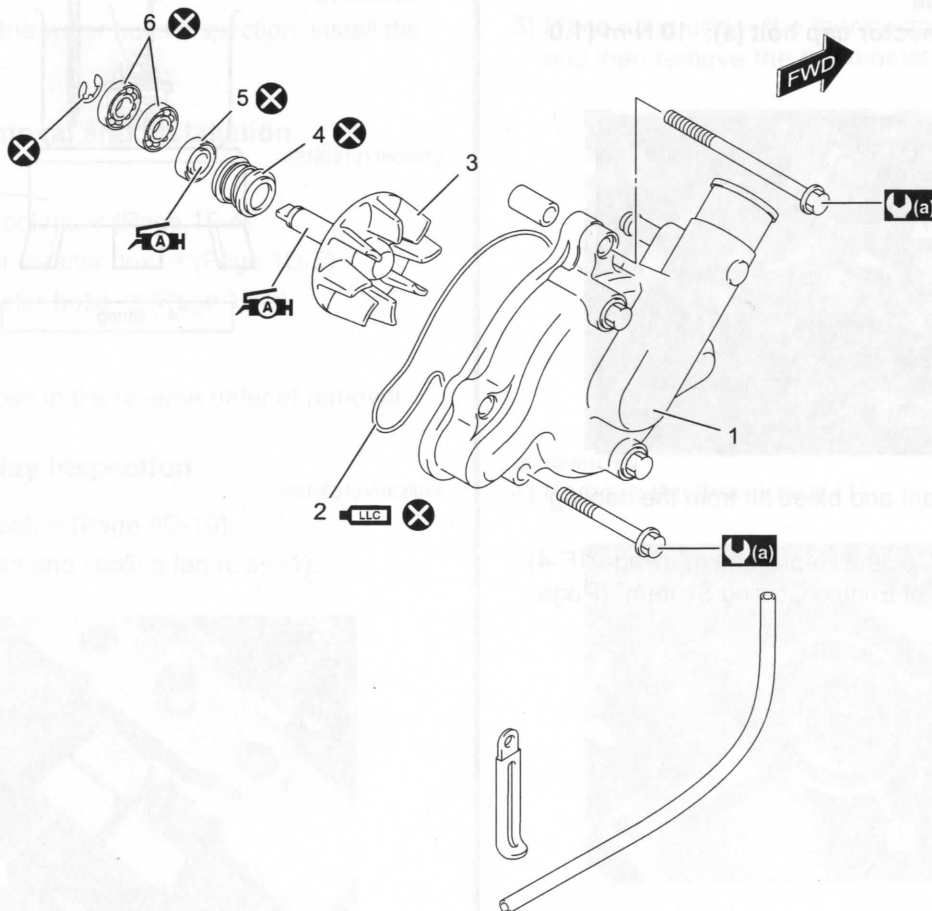
Standard: 8 mm or more at 100 °C (0.31 in or more at 212 °F)



I944H1160022-01

BENE31J11606017

Water Pump Assembly Components



IE31J1160068-03

1. Water pump case	4. Mechanical seal	(a) : 10 N·m (1.0 kgf·m, 7.5 lbf·ft)	: Do not reuse.
2. O-ring	5. Oil seal	: Apply grease.	
3. Impeller	6. Bearing	: Apply engine coolant.	